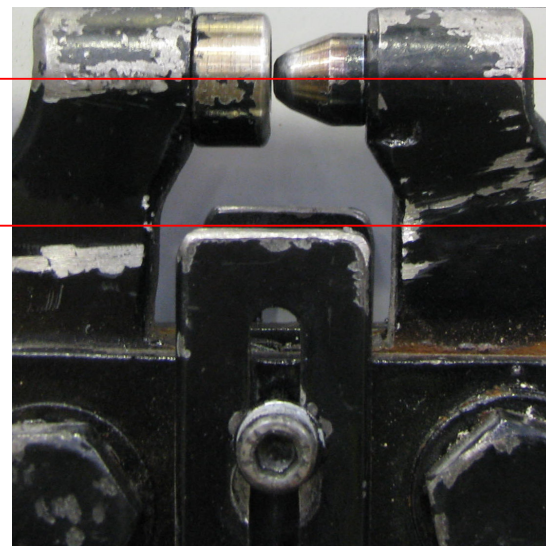
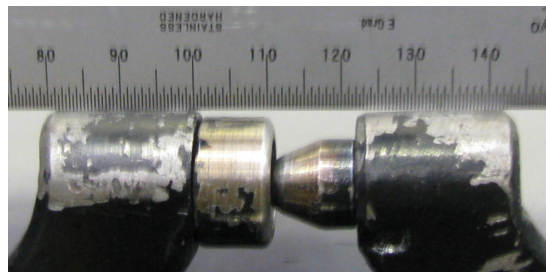
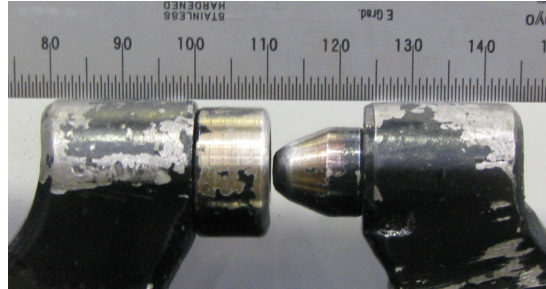


SHADOWLINE INSTRUCTIONS.

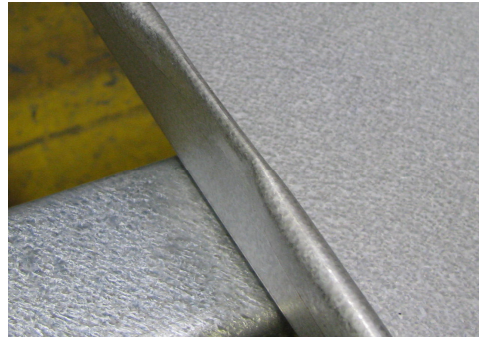
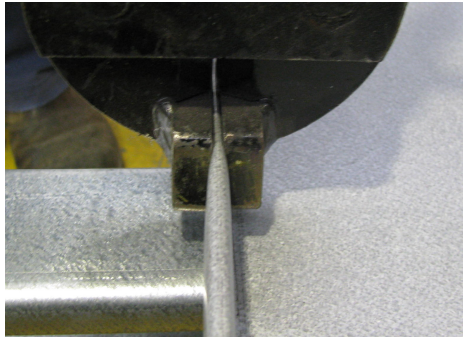
SETTING YOUR BUTTON PUNCH

- First set the depth that the button punch will punch.
- Place the button punch on its handles and lean it against a support with the button lining up with the face of the cup.
- Measure between the two punch holders, (in photo about 24mm)
- Close the handles until the gap decreases by 2.0mm.
- Adjust the stop adjustment until it is set at that distance.
- Open and close the handles and recheck the distance.
- Setting the distance down from the top of the rib of the roof sheet that the button punch is located.
- The distance from the centre of the button punch to the support guides is 17mm as shown.
- If this needs to be adjusted, loosen the set screws, adjust the stops and retightened.
- After you do the first button punch check that it is in fact punching to that dimension.
- Some minor adjustment may be required as it should punch in the centre of the hole in the clip.



INSTALLATION.

- To start fixing the sheets, fix a clip with 10x16 wafer Teks, or 10x25 wafer Teks if fixing over insulation, on the end of the top and bottom purlin.
- The clip must have the side with the external roll over away from the direction of laying the roof.
- Attach a string line to the top and bottom clip as a guide to fix the remainder of the clips to the in between purlins.
- Place the first sheet over the clips with the correct length into the gutter. Fix the up stand of the male rib to the clip to prevent the sheet from lifting in the wind before the barges are fitted.



- Using the “rib squeezer” squeeze the male rib together over each purlin, place the clip over the squeezed section of the rib and fix with screws as mentioned above.
- Each time a clip is fixed mark the pan of the last sheet to indicate the centre of the clip. This will assist to place the “button punch” in the correct location.
- Position the female rib of the next sheet over the male rib and clips ensuring that it is fully engaged.
- While standing on the rib button punch as shown through the hole in the clip, both the female and centre rib.
- This will hold the sheet in place while the rest of the roof is laid, at the end of each day button punch between the purlins at $1/3^{\text{rd}}$ span and 900mm maximum spacings.
- A string line will assist in keeping the punching in a straight line.

